



---

## VIPRE Antivirus Premium Quick Start Guide

---

Welcome! VIPRE® Antivirus Premium is a complete antivirus, anti-malware, and firewall solution for your home PC. The solution combines antivirus, antispymware, anti-rootkit, firewall, and other technologies into a seamless, tightly-integrated product, guarding your computer against more complex and malicious threats, including viruses, trojans, worms, spyware, and more.

The firewall is designed for two broad types of users—basic and advanced. For basic users, by simply turning the firewall on, there is really nothing more you need to do; it runs seamlessly in the background. However, for the advanced user, VIPRE Premium offers you a great amount of control over your firewall, including: applications, ports, network, Intrusion Detection System (IDS), and advanced exclusion rules; Web Filtering controls; Host Intrusion Prevention System (HIPS) protection; and code injection protection.

This **Quick Start Guide** allows you to jump in and start scanning and protecting your computer right away. It only covers the basic steps needed to get VIPRE Premium up and running: Installing, Using the Wizard, and Scanning your computer for malware.

### 1. Installing VIPRE Premium

Running more than one antivirus, antispymware, or antimalware product (e.g. McAfee, Norton, etc.) with real-time protection turned on can cause serious degradation in your computer's performance. Only one should be active at a time. In addition, you can use several scan tools to perform manual scans, but do so one at a time for the best performance. Please refer to those products' documentation for specific advice.

Also, running more than one firewall at the same time can make it seem that your computer is operating slower. It is recommended to uninstall or completely disable other firewall products.

---

**Note:** If you are upgrading from CounterSpy® v. 2.5 or later, this install will first uninstall your older version completely and then install VIPRE Premium v.4.0. You will need to reconfigure your settings due to the extent of changes in the newer version. After installing VIPRE Premium, the VIPRE Premium Setup Wizard automatically runs allowing you to do this.

VIPRE Premium is a software upgrade replacing Sunbelt Personal Firewall (SPF). So, SPF is uninstalled during the installation process. Since it is a major upgrade, any SPF settings or rules will not be carried over.

---

1. To install VIPRE Premium from a download, open **Windows Explorer**, navigate to the location where you saved the installation file, and double-click the file.

-or-

To install VIPRE Premium from a CD, insert the **CD** in the disk drive. On most Windows Operating Systems, the installation should start automatically. If not, open **Windows Explorer**, navigate to the CD drive, double-click the `setup.exe` file, and then select "Install VIPRE Premium" from the menu.



**Warning:** When choosing a Destination Folder for installation, it is recommended to use the default location; however, if you change the location, it's important to adhere to the following rules: must be a fixed drive; must NOT be under the Windows directory; must NOT be on the root of the drive; the file path must be less than 200 characters; and must NOT use any of the characters—;,%#\$—in the path.

2. Follow the prompts in the **InstallShield Wizard for VIPRE Premium Antivirus Premium**.
3. After VIPRE Premium is installed, you will be prompted to **restart** your computer. You must restart before VIPRE Premium can begin protecting your computer.

After restarting your computer, the VIPRE Premium Setup Wizard automatically starts.

## 2. Using the VIPRE Premium Setup Wizard

After installing VIPRE Premium and your computer restarts, the Setup Wizard opens. The wizard provides you a quick way to initially set up VIPRE Premium to get you protecting your computer right away.

The Setup Wizard covers the following:

- **Email Protection:** VIPRE Premium's Email Protection is a behind-the-scenes tool that protects your computer from potentially harmful inbound and outbound email messages. As long as you have email protection enabled, your computer is protected with automatic email scanning of all attachments for malware and viruses without you having to do anything. VIPRE Premium supports the following email programs: MS Outlook 2000+, Outlook Express 6.0+, and Windows Mail on Vista. Any POP3/SMTP client is also supported.
- **ThreatNet™:** ThreatNet is a worldwide network of thousands of CounterSpy, VIPRE Antivirus, and VIPRE Antivirus Premium users sharing and identifying potentially dangerous program files (both through manual submissions and automatically), resulting in the blocking of new malware almost as quickly as it is released into the wild. ThreatNet also enables Sunbelt Software to track new outbreaks and compile statistical information. While using ThreatNet is optional, it is recommended.

**Note:** Personal information that can associate you or your computer will NEVER be included with any sent data. For more information, see Sunbelt Software's privacy policy at [sunbeltsoftware.com](http://sunbeltsoftware.com).

- **Firewall:** Choose the default firewall behavior. You can change this any time from **Settings>Firewall** tab. Simple mode is the easiest way to protect your computer without receiving prompts. Learning mode can result in frequent prompts.
- **Activate and Register:** If you have already purchased VIPRE Premium, we recommend that you enter your Activation key now and register to receive the latest information and Technical Support assistance. Your Activation key can be found in the email we sent you. If you are unable to find it, please call our online shop for assistance (800-336-3166). If you are upgrading from CounterSpy, you will be issued a new Activation key; your old key will no longer work.

Once you click **Finish**, your selections are applied and VIPRE Premium automatically starts and downloads the latest risk definitions file. Also, a short demo launches to orientate you to VIPRE Premium. If you rather not launch the product demo and start using VIPRE Premium right away, deselect the check box.

### 3. Scanning Your Computer for Malware

Now you are ready to begin a scan of your computer. You can perform three different types of scans - Quick, Deep System, and Custom - to detect and remove malware from your computer.

For detailed descriptions of the scanning features, see the **Scan** screen in the online Help.

**Note:** You can continue to use other VIPRE Premium features while running a scan.

#### To run a scan and remove malware from your computer:

1. Click the **Scan** tab. The Scan screen displays.
2. Select one of the following:
  - **Quick Scan:** Select to scan commonly affected areas of your computer. This scan is usually shorter in duration than the Deep System Scan. You can configure additional options in the Scan Options tab on the Settings dialog box.
  - **Deep System Scan:** Select to perform a thorough scan of all areas of your computer. Depending on how full your hard drive is, this could take longer. You can configure additional options in the Scan Options tab on the Settings dialog box.
3. Optionally, select **Shutdown computer after scan** to have VIPRE Premium automatically shutdown your computer after the scan completes.
4. Click **Scan Now**. Your selected scan begins to run, displaying the Scan Progress screen allowing you to view the progress of the scan, pause the scan, or cancel it.

Once the scan completes and has found risks, the **Scan Results** screen displays the detected risks with the recommended clean action listed under the **Clean Action** column. If the scan reveals no risks, skip to step 5.

5. Click **Clean**. VIPRE Premium cleans the risks based on the recommended clean action listed in the Clean Action column.

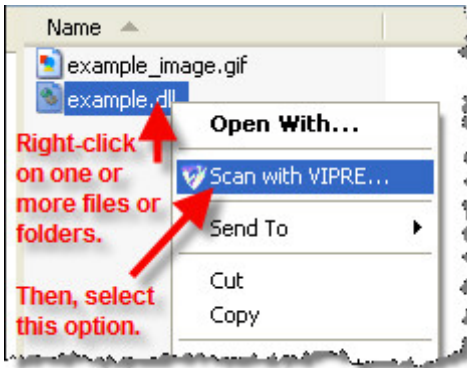
Once the risks are cleaned, the Clean Results screen displays the details and summary of the scan.

**Note:** For more information on cleaning risks, see Managing Scan Results in the Help or User Guide.

6. Click **Done**. The Clean Results screen changes to the Scan screen. Your computer is now clean of malware.

**Note:** After the cleaning is finished, you may be prompted to reboot your machine and run VIPRE Premium's Boot Time Cleaner in order to completely remove a "hard to remove" risk. Please see the online Help for more information.

You can right-click on one or more files or folders from Windows Explorer to run a scan.




You can start VIPRE Premium two ways:

- Double-click the **VIPRE Premium** icon shortcut (pictured below) on your desktop.



VIPRE

- Click **Start** and then select **Programs>Sunbelt Software>VIPRE Antivirus Premium>VIPRE Premium**.

For more information on working with other features in VIPRE Premium, please refer to the online Help, by clicking the **Help** icon  **HELP** in the application, or download the User Guide from the [www.sunbeltsoftware.com](http://www.sunbeltsoftware.com).